

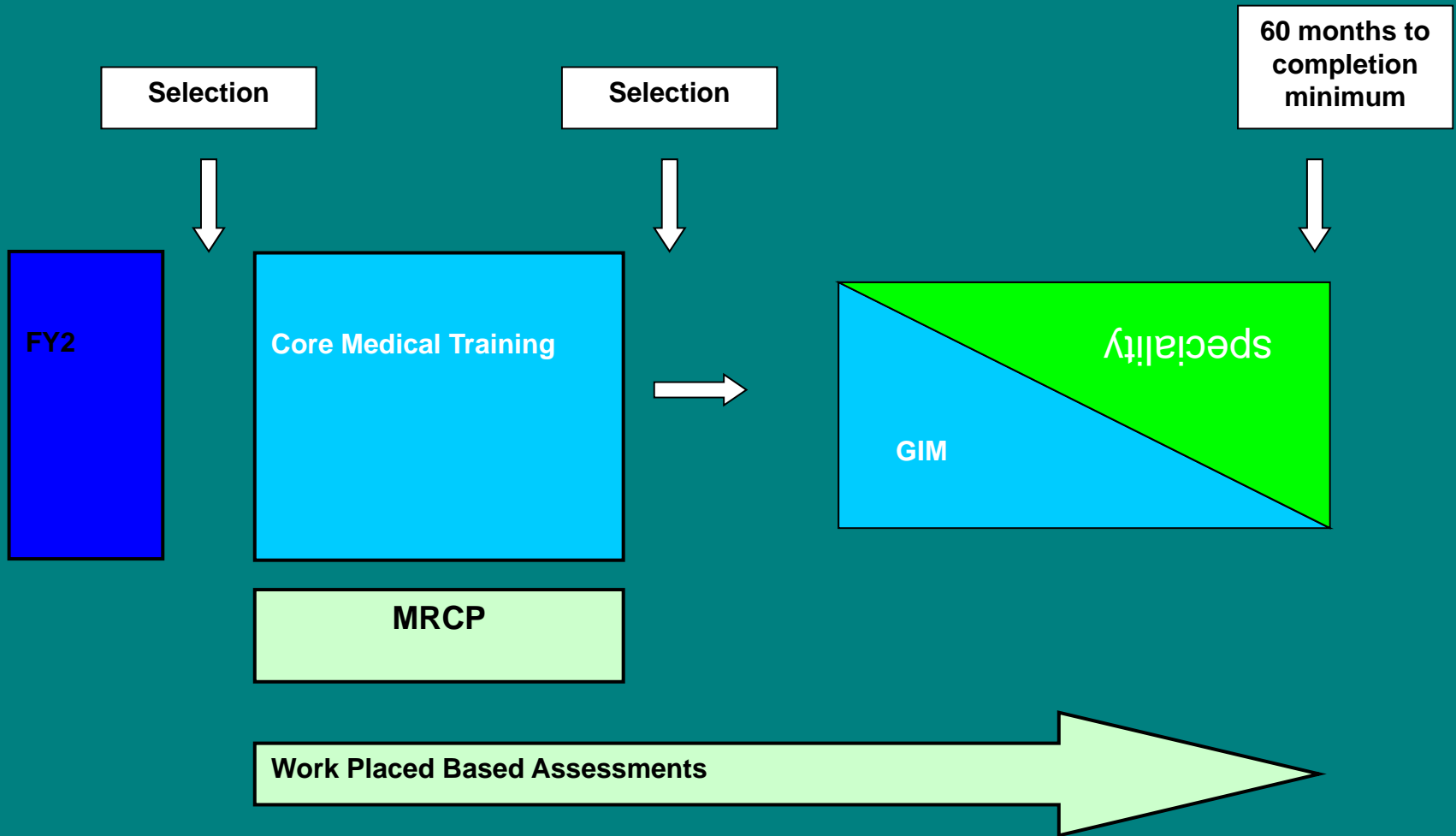
# Core Medical Training in South Yorkshire

An introduction

Lynne Caddick TPD

- “Orientation”
- What will you learn and how
- Responsibilities
- Feedback, complaints, concerns

# Career pathway for dual CCT



# After CMT?

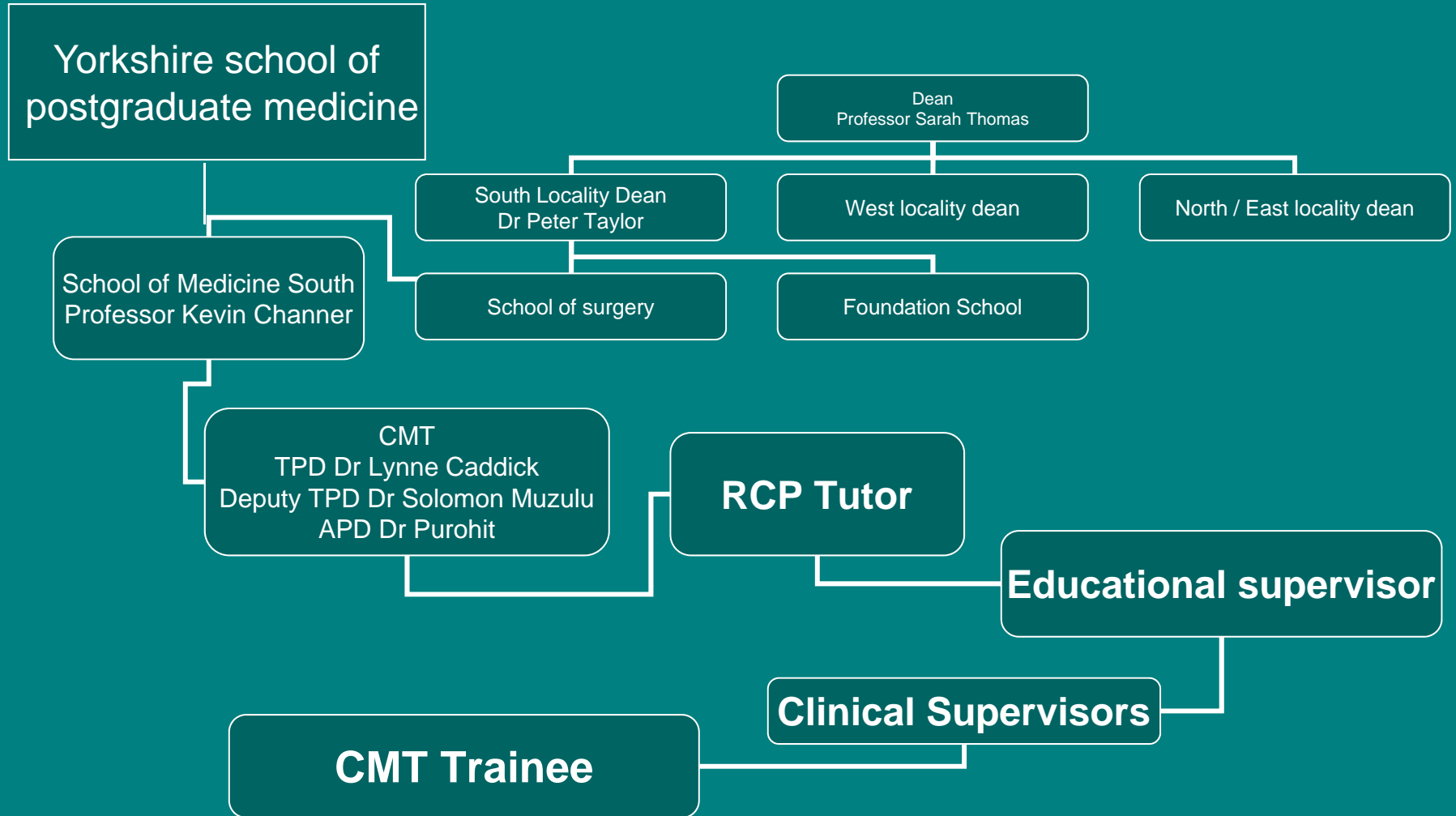
<http://www.jrcptb.org.uk/specialties/ST3-SpR/Pages/Introduction.aspx>

- Acute medicine
- Allergy
- Audiological medicine
- Cardiology
- Clinical genetics
- Clinical neurophysiology
- Dermatology
- Endocrinology and DM
- Gastroenterology
- GIM
- GUM
- Geriatric
- Haematology
- Immunology
- ID and tropical medicine
- Medical oncology
- Medical ophthalmology
- Metabolic medicine
- Neurology
- Palliative medicine
- Rehabilitation medicine
- Renal medicine
- Respiratory medicine
- Rheumatology
- Sports and exercise medicine
- Stroke medicine

# Yorkshire and Humber Deanery



# Yorkshire and Humber Deanery



# What is CMT?

- 2 year broad based programme in medical specialties between foundation and specialty training
- Competency based curriculum which builds on foundation competencies and develops core acute and general medical competencies
- Knowledge tested by MRCP examination which now maps to CMT curriculum

# How will you learn?

- **Experiential**
  - WR, OP, MDT, feedback and workplace assessments
- **Individual study and reflection on clinical experience**
  - e-Learning: BMJ, Doctors.net, Medical Masterclass, data bases for MRCP preparation
  - Reading and reflection
- **Lectures and Formal training**
  - Departmental meetings and grand rounds
  - Regional CMT training days and PACES courses

# CMT South Yorkshire Rotation:

## 1 year in DGH

- Barnsley District General
- Bassetlaw General
- Chesterfield District General
- Doncaster and Montague District
- Rotherham District General

## 1 Year Teaching Hospital

- Royal Hallamshire
- Northern General
- Weston Park

# CMT posts: 4 month attachments in South Yorkshire

## Major medical specialties at least 4 from:

- Cardiology
- Diabetes and endocrinology
- Elderly medicine
- Respiratory Medicine
- Gastroenterology
- Acute medicine

## Specialty attachment

- Nephrology
- Oncology
- Haematology
- Dermatology
- Genito-urinary Medicine
- Accident and Emergency
- Rheumatology
- Neurology

# Training Days

- 8 days per year
- Days will be hosted at each SY trust on rotation
- Each day will comprise 2 themed half days
- 75% attendance minimum (i.e. 6 days per year)
- Separate days for CT1 and CT2 and each day run twice
- Allocation of days by administrator (Kate Guest) who will work with trainees to reallocate days if service conflict. Trainee is responsible to plan study leave with educational supervisor

# PACES course

- A course in South Yorkshire before each PACES diet
- Low trainee : teacher (e.g. 2:1 but may vary according to demand)
- Mock exam
- Planned courses:
  - Sheffield (RHH) - October 2010
  - Venue TBC- January 2011
  - Chesterfield - May 2011
  - Doncaster / Bassetlaw September 2011
  - Sheffield NGH January 2012
  - Rotherham May 2012

# Trainee's Responsibility

- Enrol with JRCPTB (use YHD number / generic NTN: YOR/CMT/000/C)
- Know and complete CMT curriculum
  - Maintain a record of training in e-portfolio
  - To take MRCP
  - To plan work place assessments
- Organise meetings with educational supervisor
- To plan study leave in good time

# Educational Supervisor

- Dedicated ES for whole year
- Responsible:
  - trained in educational supervision
  - To be familiar with CMT curriculum
  - To be available for appraisal, encourage trainee to fulfil curriculum demands, to detect and act on early signs of failing trainee
  - To appraise curriculum areas and sign off of competencies
  - To prepare educational supervisor report to inform ARCP panel

# Clinical Supervisor responsibility

- Will change at each post and will have access to e-p
- Responsibilities
  - To be a mentor to trainee
  - To give feedback and supervision
  - To appraise curriculum areas and sign off of competencies
- To assess trainee by work place assessment and ensure document provides accurate and specific feedback

# Feedback from Trainees

- Problems / complaints / advice
  - Educational supervisor → RCP tutor → TPD/deputy → Locality Head of School / APD/ locality Dean
  - Polices on website
- Formal feedback
  - End of Placement Questionnaire (YHD website)
  - PMETB surveys

# Trainee forum / Representatives

- Associate RCP tutor
  - Each hospital / trust should have a CMT associate tutor who attend GIM specialist training committee meetings and meetings at RCP
- Trainee forum
  - Meets approximately 3 times each year with locality head of school of medicine.
  - Representatives from each specialty within School of Medicine

# More information

- [www.yorksandhumberdeanery.nhs.uk](http://www.yorksandhumberdeanery.nhs.uk)
- [www.jrcptb.org.uk](http://www.jrcptb.org.uk)
- [www.mrcpuk.org](http://www.mrcpuk.org)
- [www.mmc.nhs.uk](http://www.mmc.nhs.uk)
- [www.rcplondon.ac.uk](http://www.rcplondon.ac.uk)